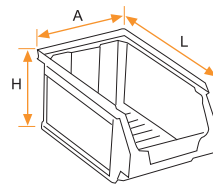
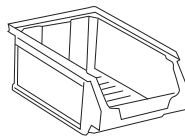
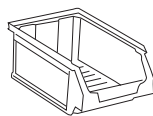
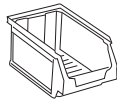
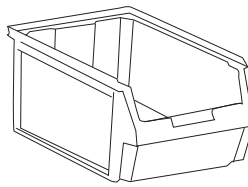
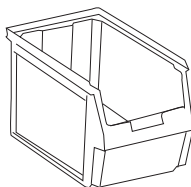
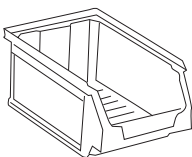
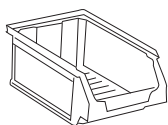


GAVETAS APILABLES

STACKABLE DRAWERS



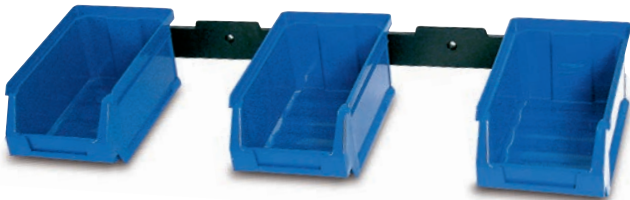
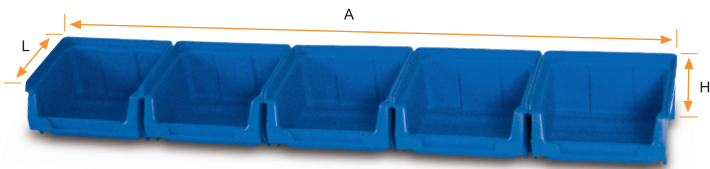
Modelo Model	51	52	53	54	55
Código Code	■ 251023 ■ 251108 251344	■ 252020 ■ 252105 252341	■ 253027 ■ 253102 253348	■ 254024 ■ 254109 254345	■ 255021 ■ 255106 255342
Medidas Sizes	L A H 170x100x80 mm	L A H 236x160x130 mm	L A H 336x160x130 mm	L A H 336x216x155 mm	L A H 336x216x200 mm
Material	PP	PP	PP	PP	PP
Capacidad (Litros) Capacity (Liters)	0,8	3,2	4,8	7,7	10,1
Embalaje Packing	24 unid.	15 unid.	10 unid.	12 unid.	10 unid.
Medidas Embalaje Packing Sizes	336x214x345 mm	820x240x255 mm	840x350x194 mm	440x378x610 mm	1120x350x304 mm



Modelo Model	56	58	59	60
Código Code	■ 256028 ■ 256103 256349	■ 258022 ■ 258107 258343	■ 259029 ■ 259104 259340	■ 260025 ■ 260100 260346
Medidas Sizes	L A H 420x270x175 mm	L A H 500x303x200 mm	L A H 500x303x300 mm	L A H 600x400x300 mm
Material	PP	PP	PP	PP
Capacidad (Litros) Capacity (Liters)	13,9	22,2	34	51,3
Embalaje Packing	8 unid.	12 unid.	6 unid.	6 unid.
Medidas Embalaje Packing Sizes	580x426x530 mm	954x512x590 mm	954x512x485 mm	804x598x600 mm



APTO PARA USO ALIMENTARIO
 Registro sanitario / Health registration
 nº 3904321/V



Modelo
Model Kit Colgar G-50

Código
Code 250903

Medidas
Sizes L A H
91x520x53 mm

Material
Gaveta PP/ Colgador PS
Drawer PP/ Hanger PS

Color
Colour Azul/Negro
Blue/Black

Contiene
Contained 5 Gavetas/ 1 Colgador
5 Drawers/ 1 Hanger

Embalaje
Packing 10 unid.

Medidas
Embalaje
Packing 528x190x280 mm
Sizes

Modelo
Model Kit Colgar G-51

Código
Code 251900

Medidas
Sizes L A H
170x520x80 mm

Material
Gaveta PP/ Colgador PS
Drawer PP/ Hanger PS

Color
Colour Azul/Negro
Blue/Black

Contiene
Contained 5 Gavetas/ 1 Colgador
5 Drawers/ 1 Hanger

Embalaje
Packing 10 unid.

Medidas
Embalaje
Packing 528x340x398 mm
Sizes