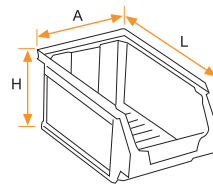
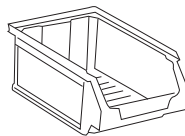
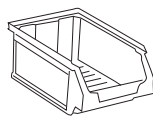
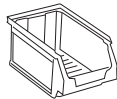
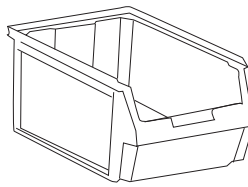
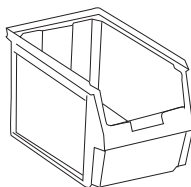
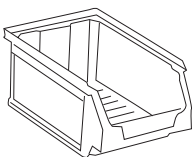
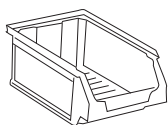


# GAVETAS APILABLES

## STACKABLE DRAWERS



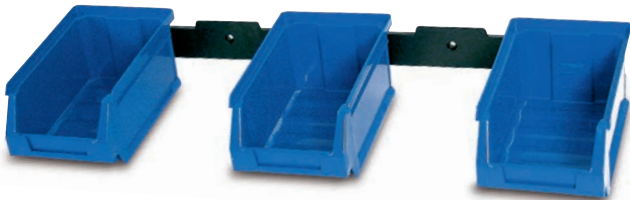
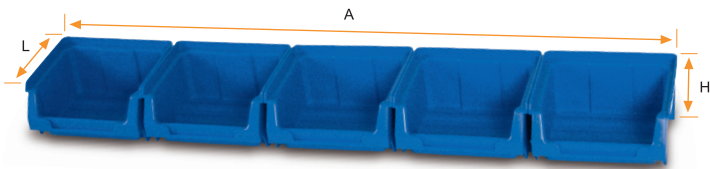
Modelo Model	51	52	53	54	55
Código Code	<span style="color: blue;">■</span> 251023 <span style="color: red;">■</span> 251108 <span style="border: 1px solid black; display: inline-block; width: 10px; height: 10px;"></span> 251344	<span style="color: blue;">■</span> 252020 <span style="color: red;">■</span> 252105 <span style="border: 1px solid black; display: inline-block; width: 10px; height: 10px;"></span> 252341	<span style="color: blue;">■</span> 253027 <span style="color: red;">■</span> 253102 <span style="border: 1px solid black; display: inline-block; width: 10px; height: 10px;"></span> 253348	<span style="color: blue;">■</span> 254024 <span style="color: red;">■</span> 254109 <span style="border: 1px solid black; display: inline-block; width: 10px; height: 10px;"></span> 254345	<span style="color: blue;">■</span> 255021 <span style="color: red;">■</span> 255106 <span style="border: 1px solid black; display: inline-block; width: 10px; height: 10px;"></span> 255342
Medidas Sizes	L A H 170x100x80 mm	L A H 236x160x130 mm	L A H 336x160x130 mm	L A H 336x216x155 mm	L A H 336x216x200 mm
Material	PP	PP	PP	PP	PP
Capacidad (Litros) Capacity (Liters)	0,8	3,2	4,8	7,7	10,1
Embalaje Packing	24 unid.	15 unid.	10 unid.	12 unid.	10 unid.
Medidas Embalaje Packing Sizes	336x214x345 mm	820x240x255 mm	840x350x194 mm	440x378x610 mm	1120x350x304 mm



Modelo Model	56	58	59	60
Código Code	<span style="color: blue;">■</span> 256028 <span style="color: red;">■</span> 256103 <span style="border: 1px solid black; display: inline-block; width: 10px; height: 10px;"></span> 256349	<span style="color: blue;">■</span> 258022 <span style="color: red;">■</span> 258107 <span style="border: 1px solid black; display: inline-block; width: 10px; height: 10px;"></span> 258343	<span style="color: blue;">■</span> 259029 <span style="color: red;">■</span> 259104 <span style="border: 1px solid black; display: inline-block; width: 10px; height: 10px;"></span> 259340	<span style="color: blue;">■</span> 260025 <span style="color: red;">■</span> 260100 <span style="border: 1px solid black; display: inline-block; width: 10px; height: 10px;"></span> 260346
Medidas Sizes	L A H 420x270x175 mm	L A H 500x303x200 mm	L A H 500x303x300 mm	L A H 600x400x300 mm
Material	PP	PP	PP	PP
Capacidad (Litros) Capacity (Liters)	13,9	22,2	34	51,3
Embalaje Packing	8 unid.	12 unid.	6 unid.	6 unid.
Medidas Embalaje Packing Sizes	580x426x530 mm	954x512x590 mm	954x512x485 mm	804x598x600 mm



**APTO PARA USO ALIMENTARIO**  
 Registro sanitario / Health registration  
 nº 3904321/V



**Modelo**  
Model Kit Colgar G-50

**Código**  
Code 250903

**Medidas**  
Sizes L A H  
91x520x53 mm

**Material**  
Gaveta PP/ Colgador PS  
Drawer PP/ Hanger PS

**Color**  
Colour Azul/Negro  
Blue/Black

**Contiene**  
Contained 5 Gavetas/ 1 Colgador  
5 Drawers/ 1 Hanger

**Embalaje**  
Packing 10 unid.

**Medidas**  
**Embalaje**  
Packing 528x190x280 mm  
Sizes

**Modelo**  
Model Kit Colgar G-51

**Código**  
Code 251900

**Medidas**  
Sizes L A H  
170x520x80 mm

**Material**  
Gaveta PP/ Colgador PS  
Drawer PP/ Hanger PS

**Color**  
Colour Azul/Negro  
Blue/Black

**Contiene**  
Contained 5 Gavetas/ 1 Colgador  
5 Drawers/ 1 Hanger

**Embalaje**  
Packing 10 unid.

**Medidas**  
**Embalaje**  
Packing 528x340x398 mm  
Sizes